



Zippity  
Zoo-Da



C

D

Pull-over tops have neck bands, stitched hems and choice of giraffe or lion appliques. View A has short sleeves, View B has long sleeves with cuffs. Shorts and pants have elastic waist. View C has stitched hems, View D pant legs are finished with cuffs.

Pattern includes 1/4" (6 mm) seam allowances.

Designed for stretch knits only with 25% stretch such as jersey, interlock, cotton knit.

**NOTE:** The garments in this package are not intended for sleep apparel.

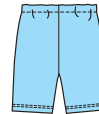
View A Front



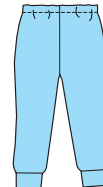
View B Front



View C Front



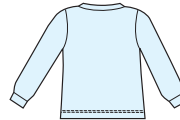
View D Front



View A Back



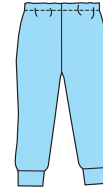
View B Back



View C Back



View D Back



For additional information see envelope or visit [www.kwiksew.com](http://www.kwiksew.com)