

Picture Perfect Dresses

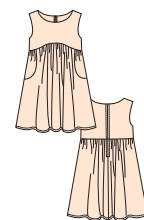


These easy, Girl's breezy dresses are perfect for Spring and Summer. Sleeveless with self-faced bodices, these dresses have gathered skirts, shaped pockets and back zipper closure. View A is plain and simple with a stitched hem. View B: jazzes it up adding front tabs with buttons and purchased double fold bias tape at the neckline, armhole, pocket edges and along waist seam. Coordinating fabrics: one for the bodice, one for the pockets, tabs and lower band and one for the skirt add extra pizzazz.

Designed for light weight woven fabrics such as cotton, cotton types, calicos, chambray, linen.

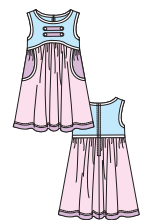
For additional information see envelope or visit www.kwiksew.com

View A Front



View A Back

View B Front



View A Back