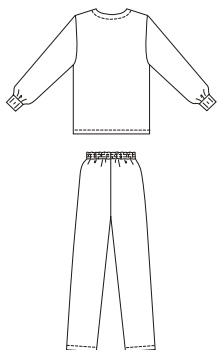
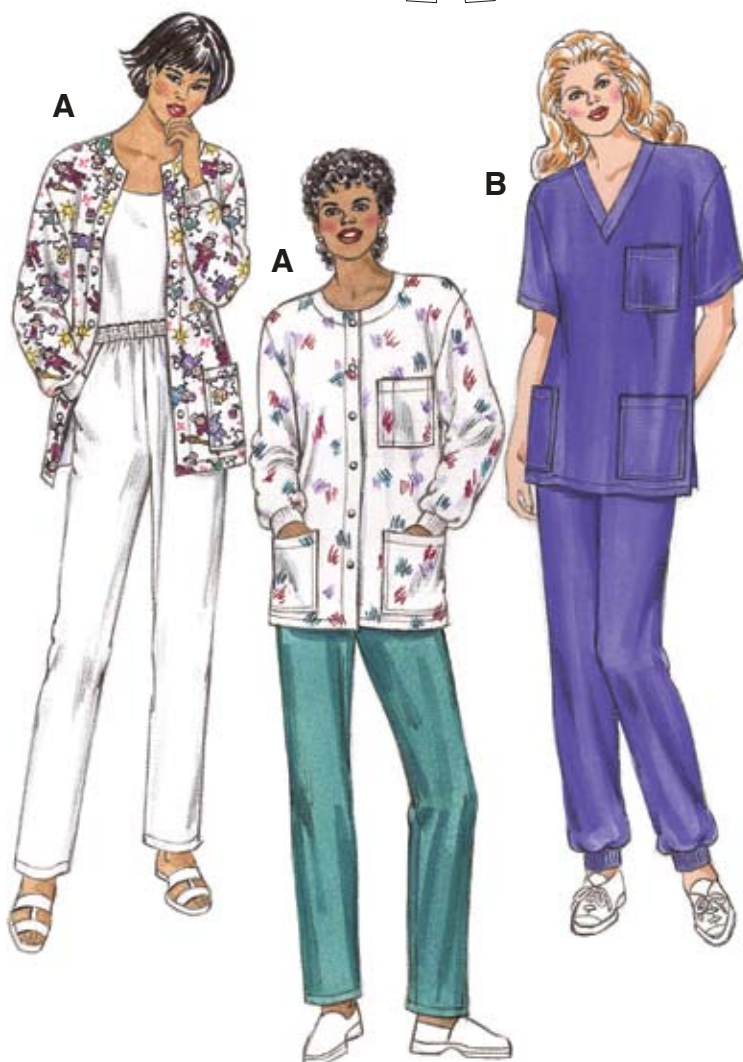
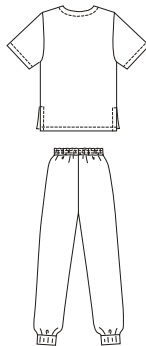


VIEW A Back



VIEW B Back



Misses' scrubs. View A shirt jacket has snap or button closure, three patch pockets and long sleeves with ribbing cuffs. View B pull-over shirt has short sleeves, three patch pockets, V-neckline and side hemline slits. Pull-on pants have front pockets and waistband with stitched elastic. View A are hemmed, View B have ribbing leg cuffs.

KWIK-SEW®
price **2807**

DESIGNED FOR WOVEN FABRICS

Suggested Fabrics: Cotton, cotton types, broadcloth, twill, calico

MISSSES' SCRUBS

Sizes: XS-S-M-L-XL

Size	XS	S	M	L	XL	
Finished Length of Shirt at Center Back						
View A or B	26 3/4 (68)	28 (71)	29 (73)	29 3/4 (75)	30 3/4 (78)	" (cm)
Finished Inside Leg Seam						
View A or B	29 (73)	29 (73)	29 (73)	29 (73)	29 (73)	" (cm)
Material Required: Fabric requirement allows for nap, one-way design or shading. Extra fabric may be needed to match design or for shrinkage.						
Fabric 60" (152 cm) Wide						
View A Shirt	1 1/2 (1.40)	1 5/8 (1.50)	1 5/8 (1.50)	1 5/8 (1.50)	2 (1.85)	yd (m)
Pants	1 3/8 (1.30)	1 1/2 (1.40)	2 1/4 (2.10)	2 1/4 (2.10)	2 1/4 (2.10)	yd (m)
View B Shirt	1 3/8 (1.30)	1 3/8 (1.30)	1 1/2 (1.40)	1 1/2 (1.40)	1 1/2 (1.40)	yd (m)
Pants	1 3/8 (1.30)	1 1/2 (1.40)	2 1/8 (1.95)	2 1/4 (2.10)	2 1/4 (2.10)	yd (m)
Fabric 45" (115 cm) Wide						
View A Shirt	2 1/4 (2.10)	2 3/8 (2.20)	2 1/2 (2.30)	2 1/2 (2.30)	2 5/8 (2.40)	yd (m)
Pants	2 3/8 (2.20)	2 1/2 (2.30)	2 1/2 (2.30)	2 1/2 (2.30)	2 5/8 (2.40)	yd (m)
View B Shirt	2 (1.85)	2 1/8 (1.95)	2 1/8 (1.95)	2 1/4 (2.10)	2 1/4 (2.10)	yd (m)
Pants	2 3/8 (2.20)	2 3/8 (2.20)	2 1/2 (2.30)	2 1/2 (2.30)	2 1/2 (2.30)	yd (m)
Ribbing 28" (71 cm) Wide						
View A Shirt	6 (15)	6 (15)	6 (15)	6 (15)	6 (15)	" (cm)
View B Pants	6 (15)	6 (15)	6 (15)	6 (15)	6 (15)	" (cm)
Fusible Interfacing 24" (60 cm) Wide						
View A Shirt	3/4 (0.70)	7/8 (0.80)	7/8 (0.80)	7/8 (0.80)	7/8 (0.80)	yd (m)
View B Shirt	3/8 (0.35)	3/8 (0.35)	3/8 (0.35)	3/8 (0.35)	3/8 (0.35)	yd (m)

Notions: Thread. SHIRT VIEW A: Six 5/8" (15 mm) buttons or snaps. PANTS: Scrap piece of fusible interfacing, 1 1/2" (4 cm) wide elastic - 3/4 yd (0.70 m) for sizes XS-S-M; 1 yd (0.95 m) for sizes L-XL.