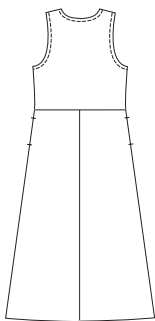
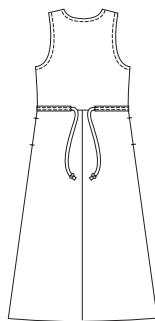




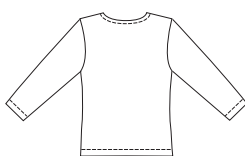
Jumper
VIEW A Back



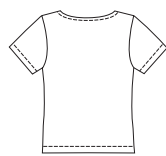
Jumper
VIEW B Back



Shirt
VIEW A Back



Shirt
VIEW B Back



Women's jumpers and shirts. Jumpers have slightly flared skirt, bust darts, pockets in side seams, and neckline and armholes are finished with bias cut self fabric bindings. View A has front button closure, View B is pullover style and has casing and self fabric ties on back. Pullover shirts are close fitting and necklines are finished with narrow hems. View A has round neckline and full length sleeves. View B has boat neckline and short sleeves.

PLUS SIZE

PLUS SIZES

KWIK•SEW®
price **2836**

JUMPER DESIGNED FOR LIGHT TO MEDIUM WEIGHT WOVEN FABRICS

Suggested Fabrics: Challis, linen, chambray, cotton, cotton types, denim

SHIRTS DESIGNED FOR STRETCH KNITS ONLY WITH 25% STRETCH

Suggested Fabrics: Interlock, jersey, stretch velour, stretch velvet, fabric with spandex Lycra®

WOMEN'S JUMPERS & SHIRTS

Sizes: 1X-2X-3X-4X

| Size | 1X | 2X | 3X | 4X | |
|--|--------------|--------------|--------------|--------------|--------|
| Finished Length of Shirt at Center Back | | | | | |
| View A & B | 25 (63) | 25 5/8 (65) | 26 1/4 (66) | 26 7/8 (68) | " (cm) |
| Finished Length of Jumper at Center Back from Natural Neckline | | | | | |
| View A & B | 51 (129) | 51 1/2 (130) | 52 (132) | 52 1/2 (133) | " (cm) |
| Material Required: Fabric requirement allows for nap, one-way design or shading. Extra fabric may be needed to match design or for shrinkage. | | | | | |
| Fabric 60" (152 cm) Wide | | | | | |
| View A Jumper | 3 (2.75) | 3 1/8 (2.85) | 3 1/4 (3.00) | 3 1/4 (3.00) | yd (m) |
| Shirt | 1 5/8 (1.50) | 1 5/8 (1.50) | 1 5/8 (1.50) | 1 3/4 (1.60) | yd (m) |
| View B Jumper | 3 1/4 (3.00) | 3 1/4 (3.00) | 3 1/4 (3.00) | 3 1/4 (3.00) | yd (m) |
| Shirt | 1 1/4 (1.15) | 1 1/4 (1.15) | 1 1/4 (1.15) | 1 3/4 (1.60) | yd (m) |
| Fabric 45" (115 cm) Wide | | | | | |
| View A Jumper | 3 5/8 (3.35) | 3 5/8 (3.35) | 3 3/4 (3.45) | 3 3/4 (3.45) | yd (m) |
| View B Jumper | 3 1/4 (3.00) | 3 1/4 (3.00) | 3 1/2 (3.20) | 3 5/8 (3.35) | yd (m) |
| Fusible Interfacing 24" (60 cm) Wide | | | | | |
| View A Jumper | 1 (0.95) | 1 (0.95) | 1 (0.95) | 1 (0.95) | yd (m) |

Notions: Thread. VIEW A Jumper: Eight 3/4" (20 mm) buttons.