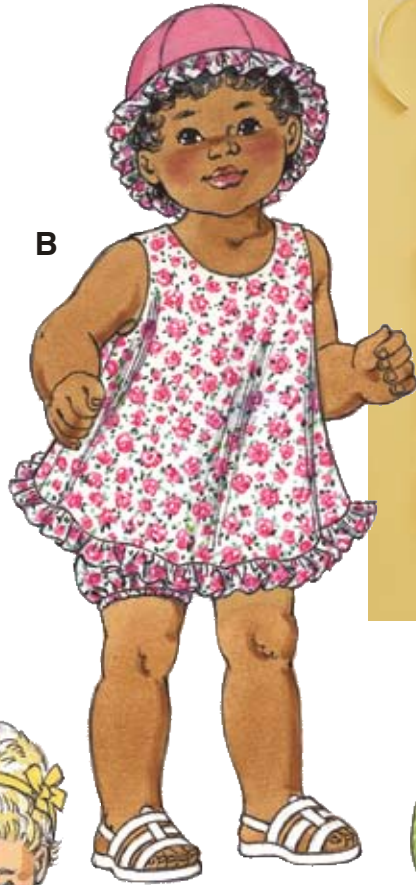


Baby sundress, bloomers, shortalls and hats. View A and B A-line sundress has opening on back with snap or button closure, neckline and armholes are finished with facings. View B has shaped bottom edge with ruffle. Bloomers View A and B have elastic in casings at waist and leg openings. Shortalls View C have pockets on back and front, snap closures on shoulders and inside legs. Hats View B and C have six panel crown. View B has ruffle and contrast fabric crown. View C has fold up brims, one brim and inside crown is from contrast fabric. Snorkeling duck appliqué is optional.



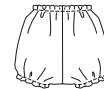
DRESS  
VIEW A Back



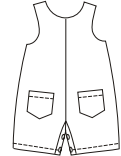
DRESS  
VIEW B Back



BLOOMERS  
VIEW A and B Back



SHORTALLS  
VIEW C Back



HAT VIEW B



HAT VIEW C



**KWIK·SEW®**  
price **3035**

DESIGNED FOR LIGHTWEIGHT WOVEN FABRICS

Suggested Fabrics: Cotton types, broadcloth, gingham, lightweight denim, calico, batiste, eyelet, seersucker

BABY SUNDRESSES, BLOOMERS,  
SHORTALLS & HATS

Sizes: S-M-L-XL

Size	S	M	L	XL	
<b>Material Required:</b> Fabric requirement allows for nap, one-way design or shading. Extra fabric may be needed to match design or for shrinkage.					
<b>Fabric 60" (152 cm) Wide</b>					
View A	3/4 (0.70)	3/4 (0.70)	7/8 (0.80)	7/8 (0.80)	yd (m)
View B Fabric	3/4 (0.70)	3/4 (0.70)	7/8 (0.80)	7/8 (0.80)	yd (m)
Contrast Fabric	1/4 (0.25)	1/4 (0.25)	1/4 (0.25)	1/4 (0.25)	yd (m)
View C Fabric	3/4 (0.70)	3/4 (0.70)	7/8 (0.80)	7/8 (0.80)	yd (m)
Contrast Fabric	1/4 (0.25)	1/4 (0.25)	1/4 (0.25)	1/4 (0.25)	yd (m)
<b>Fabric 45" (115 cm) Wide</b>					
View A	3/4 (0.70)	3/4 (0.70)	7/8 (0.80)	7/8 (0.80)	yd (m)
View B Fabric	1 (0.95)	1 (0.95)	1 1/8 (1.05)	1 1/4 (1.15)	yd (m)
Contrast Fabric	3/8 (0.35)	3/8 (0.35)	1/2 (0.50)	1/2 (0.50)	yd (m)
View C Fabric	7/8 (0.80)	1 (0.95)	1 (0.95)	1 1/8 (1.05)	yd (m)
Contrast Fabric	1/4 (0.25)	1/4 (0.25)	1/4 (0.25)	3/8 (0.35)	yd (m)

**Notions:** Thread. Optional Appliqué: scrap pieces of fabric, paper backed fusible web, tear away material.  
View A & B: two 1/2" (12 mm) snaps or buttons, piece of fusible interfacing - 3" x 15" (8 cm x 38 cm), 1 1/8 yd (1 m) of 1/4" (6 mm) wide elastic.  
View C: 1/2" (12 mm) snaps - six for sizes S - M; eight for sizes L - XL, piece of fusible interfacing 7" x 10" (18 cm x 26 cm).