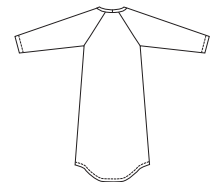


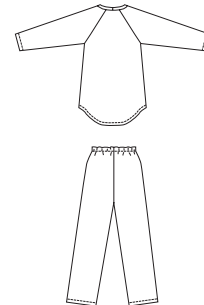


Misses' sleepwear. Pull-on pants and shorts have elastic waist. View A gown and View B top have full-length raglan sleeves, neckline finished with self-fabric neckband, and shirt-tail hemline. View C top has contrast front and back, short raglan sleeves, V-neckline, and straight hemline.

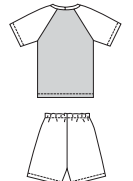
View A Back



View B Back



View C Back



□ Fabric  
■ Contrast

**KWIK**  
*Serge*

**KWIK-SEW**  
price **3144**

DESIGNED FOR STRETCH KNITS ONLY WITH 25% STRETCH  
Suggested Fabrics: Interlock, textured knits, thermal knits, pointelle jersey

MISSES' SLEEPWEAR  
Sizes: XS-S-M-L-XL

DUAL INSTRUCTION INCLUDED: SERGER (OVERLOCK) AND STANDARD SEWING MACHINES

Size	XS	S	M	L	XL	
Finished Length at Center Back						
View A	44 (112)	45 (114)	46 (117)	47 (119)	47 1/2 (121)	" (cm)
View B	24 (61)	25 1/2 (65)	26 1/2 (67)	27 1/2 (70)	28 1/2 (73)	" (cm)
View C	23 (58)	24 (61)	25 (63)	26 (66)	27 (69)	" (cm)
Finished Inside Leg Seam						
View B	29" (74 cm) - All Sizes					
View C	5" (12 cm) - All Sizes					
<b>Material Required:</b> Fabric requirement allows for nap, one-way design or shading. Extra fabric may be needed to match design or for shrinkage.						
<b>Fabric 60" (152 cm) Wide</b>						
View A	2 1/8 (1.95)	2 1/8 (1.95)	2 1/4 (2.10)	2 1/4 (2.10)	2 3/8 (2.20)	yd (m)
View B	2 3/4 (2.55)	2 7/8 (2.65)	2 7/8 (2.65)	3 1/8 (2.85)	3 1/2 (3.20)	yd (m)
View C Fabric	1 1/8 (1.05)	1 1/8 (1.05)	1 1/8 (1.05)	1 1/4 (1.15)	1 1/4 (1.15)	yd (m)
Contrast	7/8 (0.80)	7/8 (0.80)	7/8 (0.80)	7/8 (0.80)	7/8 (0.80)	yd (m)

**Notions:** Thread. VIEW B or C PANTS: 1 yd (0.95 m) of 1" (2.5 cm) wide elastic.