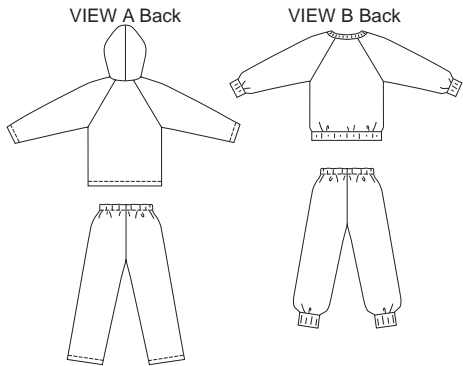




Toddlers' shirts and pants. View A shirt has raglan sleeves, hood, patch pockets, and front zipper closure. View B pullover shirt has raglan sleeves and cuffs, neckband, and waistband from ribbing. Pull-on pants have elastic at waist. View A has hemmed legs and View B has ribbing cuffs at ankles.



KWIK•SEW®
3150 price

KWIK & EASY

TODDLERS' SHIRTS & PANTS
 Sizes: T1-T2-T3-T4

DESIGNED FOR HEAVYWEIGHT STRETCH KNITS ONLY
 Suggested Fabrics: Sweatshirt fleece, Polarfleece®, French terry, double knit

Size	T1	T2	T3	T4	
Finished Length of Shirt at Center Back					
View A & B	13 (33)	13 3/4 (35)	14 1/2 (37)	15 1/2 (39)	" (cm)
Finished Inside Leg Seam					
View A & B	10 (25)	11 1/2 (29)	13 (33)	14 1/2 (37)	" (cm)
Material Required: Fabric requirement allows for nap, one-way design or shading. Extra fabric may be needed to match design or for shrinkage.					
Fabric 60" (152 cm) Wide					
View A	1 (0.95)	1 1/8 (1.05)	1 1/4 (1.15)	1 1/4 (1.15)	yd (m)
View B	1 (0.95)	1 (0.95)	1 1/8 (1.05)	1 1/4 (1.15)	yd (m)
Ribbing 28" (70 cm) Wide					
View B	12 (30)	12 (30)	12 (30)	12 (30)	" (cm)
Notions: Thread, 5/8 yd (0.60 m) of 1" (2.5 cm) wide elastic. VIEW A: One separating zipper – 12" (30 cm) for size T1; 14" (35 cm) for sizes T2-T3-T4, scrap piece of fusible interfacing. NOTE: Purchase suggested length of zipper or longer (zipper will be trimmed).					