

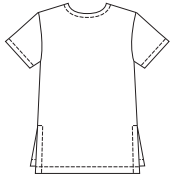
VIEW A Back



VIEW B Back



VIEW C Back



Misses' pullover top and tunics have front slits and necklines finished with bias-cut bindings. Views A and B have full-length flared sleeves with hemline slits in seam. View C has short sleeves. View A has a shirt-tail hemline and Views B and C have side hemline slits. View B has a button and loop closure at front neck opening.



KWIK•SEW®

3161 price

KWIK & EASY

MISSES' TOPS & TUNICS

Sizes: XS-S-M-L-XL

DESIGNED FOR LIGHTWEIGHT WOVEN FABRICS

Suggested Fabrics: Cotton, cotton types, challis, silk-like fabrics, rayon and blends, broadcloth

Size	XS	S	M	L	XL	
<b>Finished Length at Center Back from Neckline</b>						
View A	21 (53)	21 3/4 (55)	22 1/2 (57)	23 1/4 (59)	24 (61)	" (cm)
View B or C	27 3/4 (70)	28 3/4 (73)	29 3/4 (75)	30 1/2 (77)	31 1/2 (80)	" (cm)
<b>Material Required:</b> Fabric requirement allows for nap, one-way design or shading. Extra fabric may be needed to match design or for shrinkage.						
<b>Fabric 60" (152 cm) Wide</b>						
View A	1 1/2 (1.40)	1 1/2 (1.40)	1 1/2 (1.40)	1 1/2 (1.40)	1 5/8 (1.50)	yd (m)
View B	1 5/8 (1.50)	1 5/8 (1.50)	1 3/4 (1.60)	1 3/4 (1.60)	1 3/4 (1.60)	yd (m)
View C	1 3/8 (1.30)	1 3/8 (1.30)	1 1/2 (1.40)	1 1/2 (1.40)	1 1/2 (1.40)	yd (m)
<b>Fabric 45" (115 cm) Wide</b>						
View A	1 5/8 (1.50)	1 5/8 (1.50)	1 5/8 (1.50)	2 1/4 (2.10)	2 3/8 (2.20)	yd (m)
View B	1 3/4 (1.60)	1 7/8 (1.75)	1 7/8 (1.75)	2 3/4 (2.55)	2 3/4 (2.55)	yd (m)
View C	1 3/4 (1.60)	1 7/8 (1.75)	1 7/8 (1.75)	2 1/4 (2.10)	2 3/8 (2.20)	yd (m)

Notions: Thread, scrap piece of fusible interfacing. VIEW B: One 3/8" (1 cm) button.