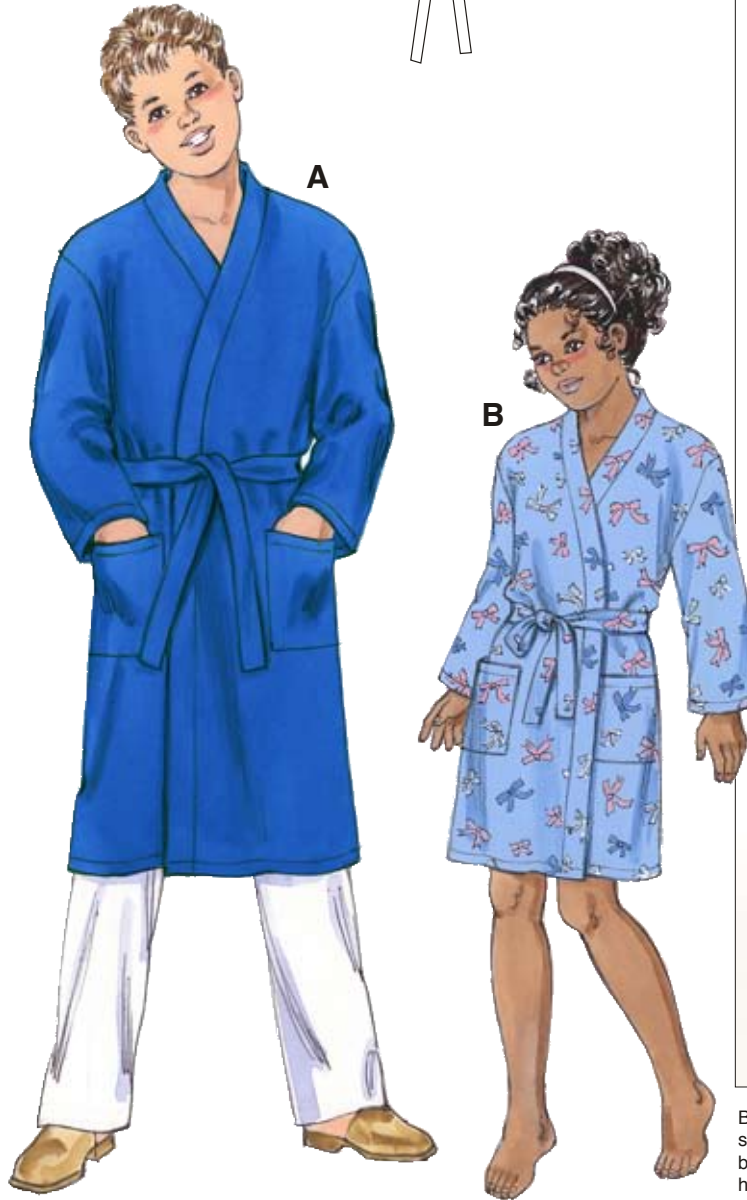
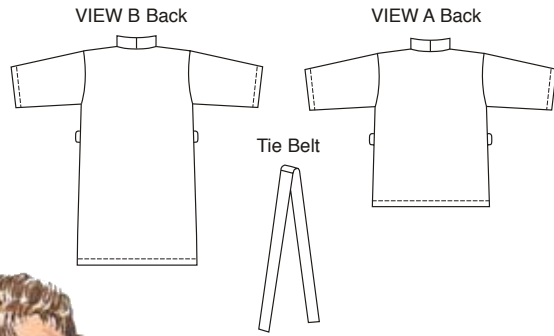


# KWIK Start® LEARN-TO-SEW

ESPECIALLY DESIGNED FOR FIRST SEWING PROJECT!



Boys' and girls' kimono-style robe has extended shoulders, patch pockets, front and neckline band, and tie belt. Robe is very easy to sew and has special easy-to-follow sewing instructions.

**KWIK·SEW®**  
price **3329**

DESIGNED FOR LIGHT TO MEDIUM WEIGHT WOVEN FABRICS

Suggested Fabrics: Cotton, cotton types, broadcloth, chambray, flannel, challis

**BOYS' & GIRLS' ROBES**  
Sizes: XS(4-5) - S(6) - M(7-8) - L(10) - XL(12-14)

**Standard Body Measurements:**

Size	XS (4-5)	S (6)	M (7-8)	L (10)	XL (12-14)	
Height	42 (107)	46 (117)	50 (127)	55 (140)	60 (152)	" (cm)
Chest	23 1/2 (60)	25 (64)	26 1/2 (67)	28 1/2 (72)	31 (79)	" (cm)

**Finished Length at Center Back**

View	A	B	A	B	A	B	
View A	27 (69)	30 (76)	32 1/2 (83)	35 1/2 (90)	39 (99)		" (cm)
View B	23 (58)	25 (64)	27 1/2 (70)	29 1/2 (75)	32 (82)		" (cm)

**Material Required:** Fabric requirement allows for nap, one-way design or shading. Extra fabric may be needed to match design or for shrinkage.

**Fabric 60" (152 cm) Wide**

View	A	B	A	B	A	B	
View A	1 5/8 (1.50)	1 3/4 (1.60)	1 7/8 (1.75)	2 1/8 (1.95)	2 3/8 (2.20)		yd (m)
View B	1 1/2 (1.40)	1 5/8 (1.50)	1 3/4 (1.60)	1 7/8 (1.75)	2 (1.85)		yd (m)

**Fabric 45" (115 cm) Wide**

View	A	B	A	B	A	B	
View A	2 1/8 (1.95)	2 3/8 (2.20)	2 5/8 (2.40)	2 3/4 (2.55)	3 (2.75)		yd (m)
View B	1 7/8 (1.75)	2 1/8 (1.95)	2 1/4 (2.10)	2 1/2 (2.30)	2 5/8 (2.40)		yd (m)

**Notions:** Thread, scrap piece of fusible interfacing.