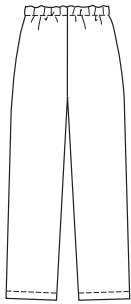


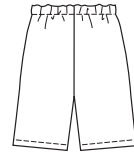
KWIK Start® LEARN-TO-SEW

ESPECIALLY DESIGNED FOR FIRST SEWING PROJECT!

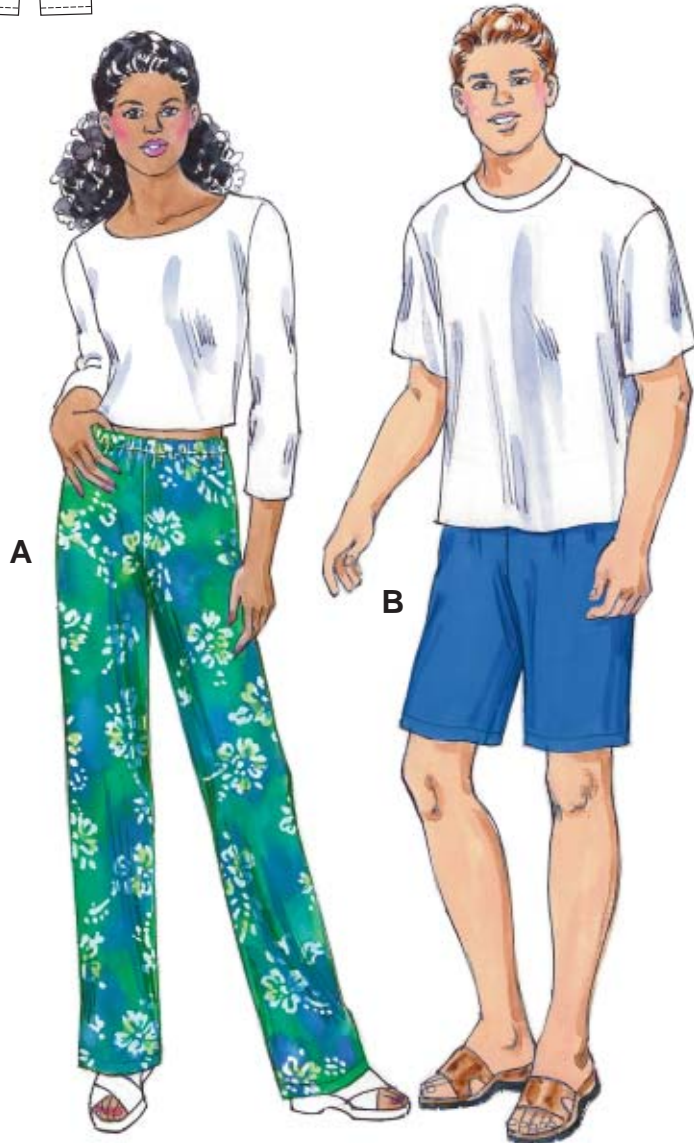
VIEW A Back



VIEW B Back



Unisex pull-on pants and shorts have elastic in casing at waist. Pants and shorts are very easy to make and have special easy-to-follow sewing instructions.



KWIK Start® LEARN-TO-SEW

PANTS

KWIK•SEW®
price **3345**

DESIGNED FOR MEDIUM WEIGHT WOVEN FABRICS

Suggested Fabrics: Cotton, cotton types, sheeting, twill, chino, linen

UNISEX PANTS
Sizes: XS-S-M-L-XL

Body Measurements:

Size	XS	S	M	L	XL	
Height	Approximately 5'6" - 5'8" (167 cm - 172 cm) All Sizes					
Hip	33 (84)	36 (91)	39 (99)	42 (106)	45 (114)	" (cm)

Finished Inside Leg Seam

View A Pants	30 (76)	30 (76)	30 (76)	30 (76)	30 (76)	" (cm)
View B Shorts	10 (25)	10 (25)	10 (25)	10 (25)	10 (25)	" (cm)

Material Required: Fabric requirement allows for nap, one-way design or shading. Extra fabric may be needed to match design or for shrinkage.

Fabric 60" (152 cm) Wide

View A Pants	1 3/8 (1.30)	1 3/8 (1.30)	1 5/8 (1.50)	2 1/4 (2.10)	2 3/8 (2.20)	yd (m)
View B Shorts	3/4 (0.70)	3/4 (0.70)	1 1/8 (1.05)	1 1/8 (1.05)	1 1/4 (1.15)	yd (m)

Fabric 45" (115 cm) Wide

View A Pants	2 1/4 (2.10)	2 3/8 (2.20)	2 5/8 (2.40)	2 5/8 (2.40)	2 3/4 (2.55)	yd (m)
View B Shorts	1 1/4 (1.15)	1 3/8 (1.30)	1 1/2 (1.40)	1 1/2 (1.40)	1 5/8 (1.50)	yd (m)

Notions: Thread, 1 yd (0.95 m) of 1" (2.5 cm) wide elastic.