

TOP VIEW A

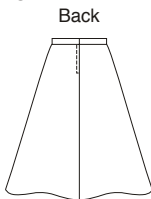


TOP VIEW B

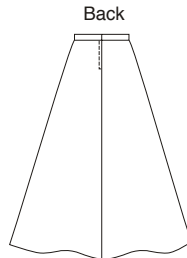


Misses' fitted tops and flared skirts. Tops have darts and zipper in left side seam. Top View A has short sleeves, round neckline, and center back slit with button and loop closure. Top View B has three-quarter length sleeves, scoop neckline, shaped hemline, and bodice is lined. A-line skirts have narrow waistband and center back zipper.

SKIRT VIEW A



SKIRT VIEW B



B



A



KWIK·SEW®  
price **3381**

### DESIGNED FOR LIGHT TO MEDIUM WEIGHT WOVEN FABRICS

Suggested Fabrics: Cotton types, jacquard, taffeta, satin, crepe, silk types, linen, rayon & blends

### MISSES' TOPS & SKIRTS

Sizes: XS-S-M-L-XL

Size	XS	S	M	L	XL	
<b>Finished Length of Top at Center Back from Natural Neckline</b>						
View A	19 (48)	19 3/4 (50)	20 1/2 (52)	21 1/4 (54)	21 3/4 (55)	" (cm)
View B	17 1/2 (44)	18 1/4 (46)	19 (48)	19 3/4 (50)	20 (51)	" (cm)
<b>Finished Length of Skirt</b>						
View A	26" (66 cm) – All Sizes					
View B	39" (99 cm) – All Sizes					
<b>Material Required:</b> Fabric requirement allows for nap, one-way design or shading. Extra fabric may be needed to match design or for shrinkage.						
<b>Fabric 60" (152 cm) Wide</b>						
TOP View A	7/8 (0.80)	1 (0.95)	1 (0.95)	1 (0.95)	1 (0.95)	yd (m)
View B	1 1/8 (1.05)	1 1/4 (1.15)	1 1/4 (1.15)	1 1/4 (1.15)	1 3/8 (1.30)	yd (m)
SKIRT View A	1 3/8 (1.30)	1 1/2 (1.40)	1 5/8 (1.50)	1 3/4 (1.60)	1 3/4 (1.60)	yd (m)
View B	2 3/8 (2.20)	2 3/8 (2.20)	2 3/8 (2.20)	2 1/2 (2.30)	2 1/2 (2.30)	yd (m)
<b>Fabric 45" (115 cm) Wide</b>						
TOP View A	1 (0.95)	1 (0.95)	1 3/8 (1.30)	1 1/2 (1.40)	1 3/4 (1.60)	yd (m)
View B	1 1/4 (1.15)	1 1/4 (1.15)	1 5/8 (1.50)	1 3/4 (1.60)	2 (1.85)	yd (m)
SKIRT View A	1 3/4 (1.60)	1 3/4 (1.60)	1 7/8 (1.75)	1 7/8 (1.75)	1 7/8 (1.75)	yd (m)
View B	3 1/8 (2.85)	3 1/8 (2.85)	Not Suitable	Not Suitable	Not Suitable	yd (m)
<b>Lining 45" (115 cm) Wide</b>						
TOP View B	3/4 (0.70)	3/4 (0.70)	1 1/8 (1.05)	1 1/4 (1.15)	1 3/8 (1.30)	yd (m)
<b>Fusible Interfacing 24" (60 cm) Wide</b>						
TOP View A & B	1/4 (0.25)	1/4 (0.25)	1/4 (0.25)	1/4 (0.25)	1/4 (0.25)	yd (m)
<b>Notions:</b> Thread. <b>TOP VIEW A:</b> One 10" (25 cm) zipper, one 1/4" (6 mm) button. <b>TOP VIEW B:</b> One 9" (22 cm) zipper. <b>Note:</b> For tops, purchase suggested length of zipper or longer, zippers will be trimmed. <b>SKIRT VIEW A &amp; B:</b> One 7" (18 cm) zipper.						

SPECIAL OCCASION