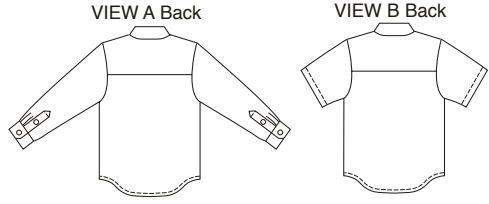




**A**

Men's shirts have double yoke, patch pocket, and shirt-tail hemline. View A has collar with separate collar stand, full-length sleeves with cuffs and sleeve plackets. View B has collar with stand in one, and short hemmed sleeves.



**B**

**2 COLLARS**

Easy - collar and stand in one  
 Classic - collar with collar stand

**KWIK·SEW®**  
**3422** price

**MEN'S SHIRTS** **DESIGNED FOR LIGHTWEIGHT WOVEN FABRICS**  
 Sizes: S-M-L-XL-XXL Suggested Fabrics: Cotton, cotton types, oxford cloth,  
 With Neck Sizes: 14 1/2 - 15 1/2 - 16 1/2 - 17 1/2 - 18 1/2 broadcloth, chambray, silk, challis

Size	S	M	L	XL	XXL	
Neck Size ( <b>Note:</b> any neck size can be used with any size body)	14 1/2 (37)	15 1/2 (39)	16 1/2 (42)	17 1/2 (44)	18 1/2 (47)	" (cm)
<b>Finished Length at Center Back</b>						
View A & B	30 1/2 (77)	31 (79)	31 1/2 (80)	32 (81)	32 1/2 (83)	" (cm)
<b>Material Required:</b> Fabric requirement allows for nap, one-way design or shading. Extra fabric may be needed to match design or for shrinkage.						
<b>Fabric 60" (152 cm) Wide</b>						
View A	2 (1.85)	2 (1.85)	2 1/8 (1.95)	2 1/8 (1.95)	2 1/4 (2.10)	yd (m)
View B	1 3/4 (1.60)	1 7/8 (1.75)	1 7/8 (1.75)	1 7/8 (1.75)	2 (1.85)	yd (m)
<b>Fabric 45" (115 cm) Wide</b>						
View A	2 1/4 (2.10)	2 3/8 (2.20)	2 1/2 (2.30)	3 (2.75)	3 1/8 (2.85)	yd (m)
View B	2 (1.85)	2 (1.85)	2 1/8 (1.95)	2 1/2 (2.30)	2 1/2 (2.30)	yd (m)
<b>Fusible Interfacing 24" (60 cm) Wide</b>						
View A	1/2 (0.50)	1/2 (0.50)	1/2 (0.50)	1/2 (0.50)	1/2 (0.50)	yd (m)
View B	1/4 (0.25)	1/4 (0.25)	1/4 (0.25)	1/4 (0.25)	1/4 (0.25)	yd (m)

**Notions:** Thread. VIEW A: Eleven 1/2" (13 mm) buttons. VIEW B: Seven 1/2" (13 mm) buttons.