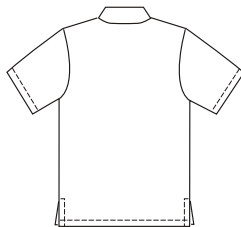




VIEW A, B & C
Back



Men's shirts have collar, short sleeves, and side hemline slits. View A has breast pocket. View B has contrast right front inset and breast pocket with contrast band at top edge. View C has contrast center panels.

KWIK·SEW®
3484 price

MEN'S SHIRTS DESIGNED FOR LIGHT WEIGHT WOVEN FABRICS

Sizes: S-M-L-XL-XXL Suggested Fabrics: Cotton, cotton types, linen, broadcloth, chambray, challis, rayon & blends

| Size | S | M | L | XL | XXL | |
|---|---|--------------|--------------|--------------|--------------|--------|
| Finished Length at Center Back | | | | | | |
| All Views | 28 1/2 (72) | 29 1/2 (75) | 30 1/2 (77) | 31 1/2 (80) | 32 1/2 (82) | " (cm) |
| Material Required: | Fabric requirement allows for nap, one-way design or shading. Extra fabric may be needed to match design or for shrinkage. | | | | | |
| Fabric 60" (152 cm) Wide | | | | | | |
| View A | 1 3/4 (1.60) | 1 7/8 (1.75) | 1 7/8 (1.75) | 2 (1.85) | 2 1/8 (1.95) | yd (m) |
| View B | 1 7/8 (1.75) | 1 7/8 (1.75) | 2 (1.85) | 2 (1.85) | 2 1/8 (1.95) | yd (m) |
| View C | 1 3/8 (1.30) | 1 1/2 (1.40) | 1 1/2 (1.40) | 1 7/8 (1.75) | 2 (1.85) | yd (m) |
| Fabric 45" (115 cm) Wide | | | | | | |
| View A | 2 1/8 (1.95) | 2 1/4 (2.10) | 2 1/4 (2.10) | 2 5/8 (2.40) | 2 3/4 (2.55) | yd (m) |
| View B | 2 1/4 (2.10) | 2 1/4 (2.10) | 2 3/8 (2.20) | 2 5/8 (2.40) | 2 3/4 (2.55) | yd (m) |
| View C | 2 1/8 (1.95) | 2 1/4 (2.10) | 2 1/4 (2.10) | 2 5/8 (2.40) | 2 3/4 (2.55) | yd (m) |
| Contrast Fabric 12" (30 cm) Wide (minimum width) | | | | | | |
| View B | 1 (0.95) | 1 (0.95) | 1 (0.95) | 1 (0.95) | 1 1/8 (1.05) | yd (m) |
| View C | 7/8 (0.80) | 1 (0.95) | 1 (0.95) | 1 (0.95) | 1 (0.95) | yd (m) |
| Fusible Interfacing 24" (60 cm) Wide | | | | | | |
| All Views | 1 (0.95) | 1 (0.95) | 1 (0.95) | 1 (0.95) | 1 1/8 (1.05) | yd (m) |
| Notions: | Thread. Five 5/8" (15 mm) buttons. | | | | | |