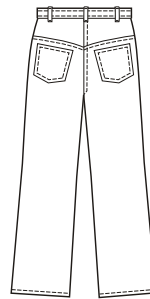
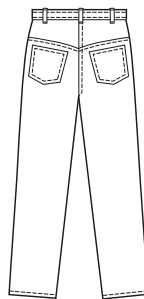


Men's jeans have fly zipper, waistband with belt carriers, back yoke, back patch pockets, front pockets, a coin pocket, and topstitching detail. View A legs are straight cut and View B are boot cut.

VIEW A Back

VIEW B Back



**KWIK•SEW®**  
**3504** price 

**MEN'S JEANS**  
 Sizes: S-M-L-XL-XXL

DESIGNED FOR MEDIUM WEIGHT WOVEN FABRICS  
 Suggested Fabrics: Denim, twill, corduroy

Size	S	M	L	XL	XXL	
Finished Inside Leg Seam	32" (81 cm) All Sizes					
View A & B	32" (81 cm) All Sizes					
Finished Width at Bottom of Leg						
View A	17 (43)	18 (46)	19 (48)	20 (51)	21 (53)	" (cm)
View B	20 (51)	21 (53)	22 (56)	23 (58)	24 (61)	" (cm)
<b>Material Required:</b> Fabric requirement allows for nap, one-way design or shading. Extra fabric may be needed to match design or for shrinkage.						
<b>Fabric 60" (152 cm) Wide</b>						
View A & B	1 3/4 (1.60)	1 3/4 (1.60)	1 7/8 (1.75)	2 5/8 (2.40)	2 5/8 (2.40)	yd (m)
<b>Fabric 45" (115 cm) Wide</b>						
View A & B	2 1/2 (2.30)	2 1/2 (2.30)	2 3/4 (2.55)	2 3/4 (2.55)	2 7/8 (2.65)	yd (m)
<b>Lining 36" (90 cm) Wide Minimum Width</b>						
View A & B	3/8 (0.35)	3/8 (0.35)	3/8 (0.35)	3/8 (0.35)	3/8 (0.35)	yd (m)
<b>Notions:</b> Thread. One 5/8" (15 mm) button or snap. One zipper—7" (18 cm) for sizes S & M; 9" (22 cm) for sizes L, XL, & XXL (or longer—zipper will be trimmed).						