



price **3638**

MEN'S JACKET & VEST
S-M-L-XL-XXL

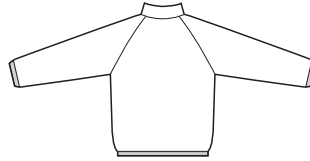


Jacket and Vest have stand up collar, pockets in panel seams, and center front zipper closure. Jacket has raglan sleeves, and bottom edge and bottom edges of sleeves are finished with bindings from swimwear fabric. Vest has armholes and bottom edge finished with bindings from swimwear fabric.

FABRICS: Designed for heavyweight stretch knits.

Suggested Fabrics: Polarfleece®, heavy sweatshirt fleece, blanket fleece. Bindings from two-way stretch swimwear fabric with 75% stretch.

View A Back



View B Back



STANDARD BODY MEASUREMENTS:

SIZES:	S	M	L	XL	XXL	
Chest	34-36	38-40	42-44	46-48	50-52	"
	86-91	96-101	106-111	116-122	127-132	cm
Finished Length at Center Back						
	26	26	26½	28½	28¾	"
	66	66	67	72	73	cm

MATERIAL REQUIRED: Fabric requirement allows for nap, one-way design or shading. Extra fabric may be needed to match design or for shrinkage.

SIZES:	S	M	L	XL	XXL	
--------	---	---	---	----	-----	--

FABRIC 60" (152 cm) WIDE

View A	1¾ (1.60)	1⅞ (1.75)	2 (1.85)	2 (1.85)	2¼ (2.10)	yd (m)
View B	1¼ (1.15)	1¼ (1.15)	1¼ (1.15)	1⅝ (1.30)	1½ (1.40)	yd (m)

SWIMWEAR FABRIC 12" (30 cm) WIDE (Minimum Width)

View A	⅝ (0.60)	⅝ (0.60)	¾ (0.70)	¾ (0.70)	¾ (0.70)	yd (m)
View B	¾ (0.70)	¾ (0.70)	¾ (0.70)	⅞ (0.80)	⅞ (0.80)	yd (m)

FUSIBLE INTERFACING 24" (60 cm) WIDE

View A & B	⅞ (0.15)	⅞ (0.15)	⅞ (0.15)	⅞ (0.15)	⅞ (0.15)	yd (m)
------------	----------	----------	----------	----------	----------	--------

NOTIONS: Thread, one separating zipper: 26" (65 cm) for sizes S-M-L; 28" (70 cm) for sizes XL-XXL.

