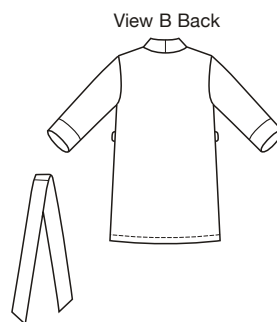


□ Fabric  
 □ Contrast  
 □ Piping



price

**3644**

**MISSES' ROBES**  
 XS-S-M-L-XL

**Designed for lightweight woven fabrics.**

Suggested Fabrics: Cotton, cotton types, lawn, batiste, broadcloth, challis, silk, silk types, charmeuse.

Wrap robes have shawl collar, patch pockets with bands, full length sleeves with sleeve bands, and tie belt. View A upper collar, pocket bands, and sleeve bands are from contrast fabric and have piping trim.

Size	XS	S	M	L	XL	
<b>Finished Length from Waist</b>	<b>View A 34" (86 cm) — All Sizes</b>		<b>View B 24" (62 cm) — All Sizes</b>			
<b>Material Required:</b> Fabric requirement allows for nap, one-way design or shading. Extra fabric may be needed to match design or for shrinkage.						
<b>Fabric 60" (152 cm) Wide</b>						
View A	2 5/8 (2.40)	2 3/4 (2.55)	2 3/4 (2.55)	2 7/8 (2.65)	2 7/8 (2.65)	yd (m)
View A Contrast	1 3/4 (1.60)	1 3/4 (1.60)	1 3/4 (1.60)	1 3/4 (1.60)	1 3/4 (1.60)	yd (m)
View B	2 1/2 (2.30)	2 5/8 (2.40)	2 3/4 (2.55)	2 3/4 (2.55)	2 3/4 (2.55)	yd (m)
<b>Fabric 45" (115 cm) Wide</b>						
View A	3 3/4 (3.45)	3 3/4 (3.45)	3 3/4 (3.45)	3 7/8 (3.55)	3 7/8 (3.55)	yd (m)
View A Contrast	1 3/4 (1.60)	1 3/4 (1.60)	1 3/4 (1.60)	1 3/4 (1.60)	1 3/4 (1.60)	yd (m)
View B	3 5/8 (3.35)	3 5/8 (3.35)	3 7/8 (3.55)	3 7/8 (3.55)	4 (3.70)	yd (m)
<b>Fusible Interfacing 24" (60 cm) Wide</b>						
View A	1 5/8 (1.50)	1 3/4 (1.60)	1 3/4 (1.60)	1 3/4 (1.60)	1 3/4 (1.60)	yd (m)
View B	1 3/8 (1.30)	1 3/8 (1.30)	1 1/2 (1.40)	1 1/2 (1.40)	1 1/2 (1.40)	yd (m)
<b>Notions:</b> Thread. <b>View A:</b> 3 yd (2.75 m) of piping.						