

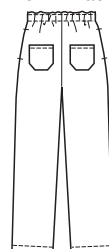


price **3663** MEN'S PANTS  
S-M-L-XL-XXL

**Designed for light to medium weight woven and firm knit fabrics.**  
Suggested Fabrics: Twill, chino, gabardine, sweatshirt fleece, nylon windbreaker types.

Pull-on pants have stitched elastic and drawstring at waist, pockets in outside leg seams, and back patch pockets. View B pants have zippers in outside leg seams and elastic at bottom edges.

View A Back



View B Back



Size	S	M	L	XL	XXL	
<b>Finished Inside Leg Seam</b>	View A & B 30" (76 cm) — All Sizes					
<b>Material Required:</b>	Fabric requirement allows for nap, one-way design or shading. Extra fabric may be needed to match design or for shrinkage.					
<b>Fabric 60" (152 cm) Wide</b>						
View A & B	1 3/4 (1.60)	2 1/4 (2.10)	2 1/4 (2.10)	2 1/2 (2.30)	2 3/4 (2.55)	yd (m)
<b>Fabric 45" (115 cm) Wide</b>						
View A & B	2 5/8 (2.40)	2 5/8 (2.40)	2 3/4 (2.55)	2 3/4 (2.55)	2 7/8 (2.65)	yd (m)
<b>Notions:</b>	Thread, 1 1/8 yd (1 m) of 1 1/2" (4 cm) wide elastic, one drawstring for waist, scrap piece of fusible interfacing, two eyelets—optional.					
<b>View B:</b>	7/8 yd (0.80 m) of 1" (2.5 cm) wide elastic, two 9" (22 cm) zippers.					