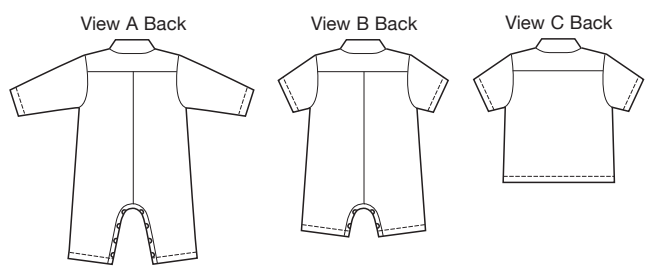


price **3730** **BABY OVERALLS & SHIRT**
S-M-L-XL-XXL

Designed for woven fabrics.
Suggested Fabrics: Cotton, cotton blends, seersucker, linen, denim, corduroy.

Overalls have back yoke with forward shoulder seams, collar, front placket opening with button or snap closures, patch pockets, snap closure on inside leg, and optional topstitching detail. View A overalls are full length with full length sleeves. View B overalls are short with short sleeves, and have bias cut trim on fronts. View C shirt has back yoke with forward shoulder seams, breast pocket, short sleeves, and front button closure.



Size	S	M	L	XL	XXL	
Material Required: Fabric requirement allows for nap, one-way design or shading. Extra fabric may be needed to match design or for shrinkage.						
Fabric 60" (152 cm) Wide						
View A	7/8 (0.80)	7/8 (0.80)	1 (0.95)	1 (0.95)	1 1/8 (1.05)	yd (m)
View B	3/4 (0.70)	3/4 (0.70)	3/4 (0.70)	3/4 (0.70)	7/8 (0.80)	yd (m)
View C	3/8 (0.35)	1/2 (0.50)	1/2 (0.50)	1/2 (0.50)	1/2 (0.50)	yd (m)
Fabric 45" (115 cm) Wide						
View A	1 (0.95)	1 1/8 (1.05)	1 1/4 (1.15)	1 3/8 (1.30)	1 1/2 (1.40)	yd (m)
View B	7/8 (0.80)	7/8 (0.80)	7/8 (0.80)	1 (0.95)	1 1/8 (1.05)	yd (m)
View C	1/2 (0.50)	5/8 (0.60)	5/8 (0.60)	3/4 (0.70)	3/4 (0.70)	yd (m)
Fusible Interfacing 24" (60 cm) Wide						
View A, B & C	3/8 (0.35)	3/8 (0.35)	1/2 (0.50)	1/2 (0.50)	1/2 (0.50)	yd (m)
Notions: Thread, four 1/2" (12 mm) buttons or snaps for front. View A: Snap sets for inside leg — eight for sizes S-M-L; ten for sizes XL-XXL.						
View B: Four snap sets for inside leg.						