

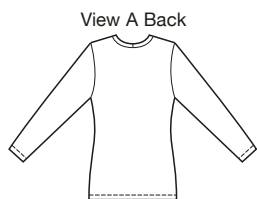


Designed for stretch knits only with 35% stretch across the grain.
Suggested Fabrics: Interlock, jersey, textured knits, matte jersey.

price **3766**

MISSSES' TOPS
XS-S-M-L-XL

Close fitting pull-over tops have self fabric neckbands. View A has round neckline and full length sleeves. View B has scoop neckline and short sleeves. Tops are very easy to sew and have special easy-to-follow sewing instructions. Pattern includes 1/4" (6 mm) seam allowances.



Size	XS	S	M	L	XL	
Finished Length at Center Back						
View A	23 (58)	23 1/2 (60)	24 1/4 (62)	25 (63)	25 1/2 (65)	" (cm)
View B	22 (56)	22 1/2 (57)	23 1/4 (59)	24 (61)	24 3/4 (63)	" (cm)
Material Required: Fabric requirement allows for nap, one-way design or shading. Extra fabric may be needed to match design or for shrinkage.						
Fabric 60" (152 cm) Wide						
View A	1 1/2 (1.40)	1 1/2 (1.40)	1 5/8 (1.50)	1 5/8 (1.50)	1 5/8 (1.50)	yd (m)
View B	1 1/8 (1.05)	1 1/8 (1.05)	1 1/8 (1.05)	1 1/8 (1.05)	1 1/8 (1.05)	yd (m)
Notions: Thread, scrap piece of fusible interfacing.						