



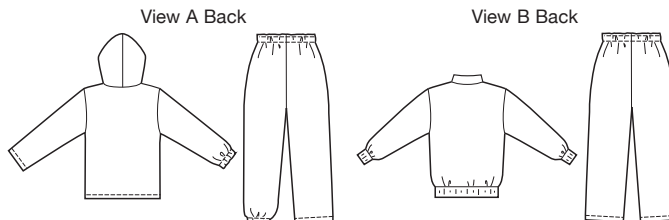
price **3773** BOYS' & GIRLS' SHIRTS & PANTS
XS (4-5) - S (6) - M (7-8) - L (10) - XL (12-14)

ABCDEFGHIJKLM
NOPQRSTUVWXYZ
YZ 1234567890

Designed for stretch knits only.

Suggested Fabrics: Sweatshirt fleece, French terry, stretch velour, Polarfleece®, double knit.

Pull-over shirts have slightly extended shoulders and full length sleeves. View A shirt has kangaroo pocket, hood, hemmed bottom edge, and optional elastic at wrists. View B shirt has stand-up collar with zipper, and ribbing cuffs and waistband. Pull-on pants have no side seams, elastic in casing at waist, and waist drawstring. View A has optional elastic in casings at ankles. Letters and numbers for optional appliqués are included. Pattern includes 1/4" (6 mm) seam allowances.



Size	XS	S	M	L	XL	
Finished Length of Top at Center Back						
View A	16 1/2 (42)	18 (46)	19 1/2 (50)	21 1/2 (54)	23 (58)	" (cm)
View B	16 (41)	17 1/2 (44)	19 (48)	20 3/4 (52)	22 1/2 (57)	" (cm)
Finished Inside Leg Seam						
View A & B	16 1/2 (42)	19 (48)	21 (53)	23 1/2 (59)	26 1/2 (67)	" (cm)
Material Required: Fabric requirement allows for nap, one-way design or shading. Extra fabric may be needed to match design or for shrinkage.						
Fabric 60" (152 cm) Wide						
View A	1 1/2 (1.40)	1 5/8 (1.50)	1 3/4 (1.60)	2 1/4 (2.10)	2 5/8 (2.40)	yd (m)
View B	1 1/4 (1.15)	1 3/8 (1.30)	1 1/2 (1.40)	2 (1.85)	2 1/2 (2.30)	yd (m)
Ribbing 28" (70 cm) Wide						
View B	12 (30)	12 (30)	12 (30)	13 (35)	13 (35)	" (cm)

Notions: Thread, scrap piece of fusible interfacing, 3/4 yd (0.70 m) of 1 1/4" (3 cm) wide elastic, one drawstring. **Optional Appliqué:** Scrap pieces of contrast fabric, tear-away material. **View A:** 1 1/4 yd (1.15 m) of 3/4" (2 cm) wide elastic (optional). **View B:** One 7" (18 cm) zipper for XS-S-M, One 9" (23 cm) zipper for L-XL.