

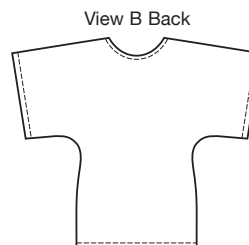
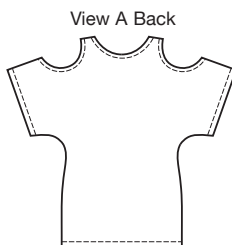


price **3880**

MISSES' TOPS
XS-S-M-L-XL

Designed for stretch knits only with 25% stretch across the grain.
Suggested Fabrics: Interlock, jersey, matte jersey.

Pull-over tops have dolman sleeves and scoop neckline finished with self fabric binding, and sleeves and bottom edge are hemmed. View A has shoulder openings finished with narrow hems. Pattern includes 1/4" (6 mm) seam allowances.



Size	XS	S	M	L	XL	
Finished Length at Center Back from Natural Neckline						
View A & B	23 1/2 (60)	24 1/2 (63)	25 1/2 (65)	26 1/2 (68)	27 1/2 (70)	" (cm)
Material Required: Fabric requirement allows for nap, one-way design or shading. Extra fabric may be needed to match design or for shrinkage.						
Fabric 58" (148 cm) Wide						
View A & B	1 1/2 (1.40)	1 5/8 (1.50)	1 5/8 (1.50)	1 3/4 (1.60)	1 3/4 (1.60)	yd (m)
Notions: Thread.						