



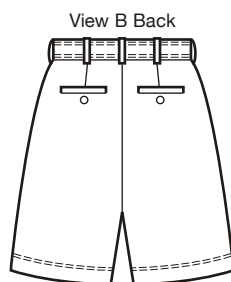
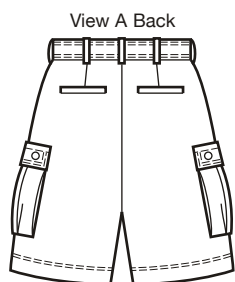
**Designed for woven fabrics.**

Suggested Fabrics: Twill, denim, gabardine, chino, cotton, cotton types, corduroy, linen.

price **3884**

**MEN'S SHORTS**  
S-M-L-XL-XXL

Flat-front shorts have front side pockets, fly zipper, waistband with belt loops and hook and eye or button closure, back welt pockets with optional button closure, and topstitching detail. View A shorts have pleated cargo pockets with buttoned flaps at sides. Pattern includes 5/8" (1.5 cm) seam allowances.



Size	S	M	L	XL	XXL	
<b>Finished Inside Leg Seam</b>	<b>View A &amp; B 10" (25 cm) – All Sizes</b>					
<b>Material Required:</b>	Fabric requirement allows for nap, one-way design or shading. Extra fabric may be needed to match design or for shrinkage.					
<b>Fabric 58" (148 cm) Wide</b>						
View A	1 1/2 (1.40)	1 5/8 (1.50)	1 3/4 (1.60)	1 7/8 (1.75)	1 7/8 (1.75)	yd (m)
View B	1 3/8 (1.30)	1 3/8 (1.30)	1 3/8 (1.30)	1 5/8 (1.50)	1 5/8 (1.50)	yd (m)
<b>Fabric 44" (112 cm) Wide</b>						
View A	2 (1.85)	2 (1.85)	2 (1.85)	2 1/8 (1.95)	2 3/8 (2.20)	yd (m)
View B	1 1/2 (1.40)	1 1/2 (1.40)	1 5/8 (1.50)	1 3/4 (1.60)	1 7/8 (1.75)	yd (m)
<b>Lining 58" (148 cm) Wide</b> (for pockets and inside waistband)						
View A & B	5/8 (0.60)	5/8 (0.60)	3/4 (0.70)	3/4 (0.70)	3/4 (0.70)	yd (m)
<b>Lining 44" (112 cm) Wide</b> (for pockets and inside waistband)						
View A & B	1 (0.95)	1 (0.95)	1 (0.95)	1 (0.95)	1 (0.95)	yd (m)
<b>Fusible Interfacing 22" (56 cm) Wide</b>						
View A & B	5/8 (0.60)	5/8 (0.60)	3/4 (0.70)	3/4 (0.70)	7/8 (0.80)	yd (m)

**Notions:** Thread, one zipper – 9" (22 cm) or longer. Zipper will be trimmed. Two 1/2" (13 mm) buttons for back pockets (optional). One hook and eye set or button for waist. **View A:** Four 5/8" (15 mm) buttons.