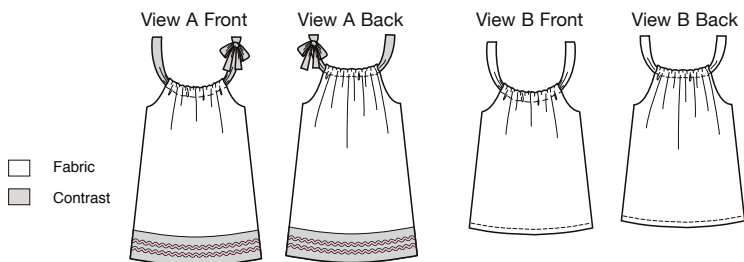




BABY & TODDLER

Dress and tunic have a tie in casing at neckline, which gathers front and back and ties at one shoulder, or bow can be eliminated. Armholes and neckline are finished with facings. View A dress and bottom edge extension are from contrast fabric. Trim is optional. Pattern includes 1/4" (6 mm) seam allowances.



K3934 TODDLERS' DRESS & TUNIC

T1-T2-T3-T4

DESIGNED FOR LIGHTWEIGHT WOVEN FABRICS.											
Suggested Fabrics: Challis, gauze, lawn, soft cotton, handkerchief linen.											
SIZE	T1	T2	T3	T4		SIZE	T1	T2	T3	T4	
FINISHED LENGTH AT CENTER BACK											
A	15½ 39	16½ 42	17¾ 45	19 48	in cm	B	13 33	13¾ 35	15 38	15¾ 40	in cm
FABRIC 58" (148 cm) WIDE					FABRIC 42" (106 cm) WIDE						
A	½ 0.50	½ 0.50	⅝ 0.60	⅝ 0.60	yd m	A	⅝ 0.60	¾ 0.70	¾ 0.70	¾ 0.70	yd m
B	⅝ 0.60	⅝ 0.60	⅝ 0.60	¾ 0.70	yd m	B	⅞ 0.80	⅞ 0.80	⅞ 0.80	1 0.95	yd m
CONTRAST 58" (148 cm) WIDE					CONTRAST 42" (106 cm) WIDE						
A	⅜ 0.35	⅜ 0.35	⅜ 0.35	⅜ 0.35	yd m	A	⅜ 0.35	⅜ 0.35	⅜ 0.35	⅜ 0.35	yd m
NOTIONS: Thread. View A: Optional Trim — 1½ yd (1.05 m) for each row.											