



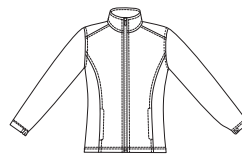
K4032

MISSSES'/MEN'S JACKETS S-M-L-XL

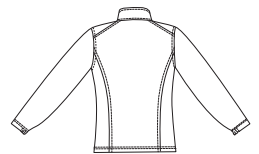
DESIGNED FOR HEAVYWEIGHT STRETCH KNITS WITH 25% STRETCH ACROSS THE GRAIN.
Suggested Fabrics: Polarfleece®, Heavy Sweatshirt Fleece. Pocket Lining: Tricot.

SIZE	S	M	L	XL		SIZE	S	M	L	XL	
FINISHED BACK LENGTH FROM BASE OF YOUR NECK						FABRIC 60" (152 cm) WIDE					
Jacket A	23¾ 60	26 66	28¾ 72	28¾ 73	in cm	Jacket A	1½ 1.50	1¾ 1.60	1¾ 1.80	1¾ 1.80	yd m
Jacket B	25¾ 65	28 71	30¾ 76	30¾ 77	in cm	Jacket B	1¼ 1.20	1¼ 1.20	1¼ 1.20	1½ 1.40	yd m
NOTIONS: Thread, Two 7" (18 cm) zippers, one separating zipper - 24" (61 cm) for S, 26" (66 cm) for M, 28" (71 cm) for L-XL. A: ½ yd (0.50 m) of ¾" (2 cm) wide elastic.						Contrast B - ⅞ yd (0.80 m) all sizes					
						Lining A - ⅜ yd (0.40 m) all sizes					
						Lining B - ⅜ yd (0.40 m) all sizes					

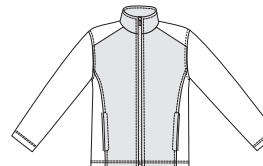
View A Front



View A Back



View B Front



View B Back

