



## K4041 Misses' Tops

XS-S-M-L-XL

Raglan sleeve tops have round neckline with self-fabric neckband and shirt-tail hemline. B has contrast sleeves and neckband.

**FABRICS:** Designed for stretch knits only with 35% stretch across the grain.

Suggested Fabrics: Lightweight jersey, interlock, matte jersey.

### STANDARD BODY MEASUREMENTS:

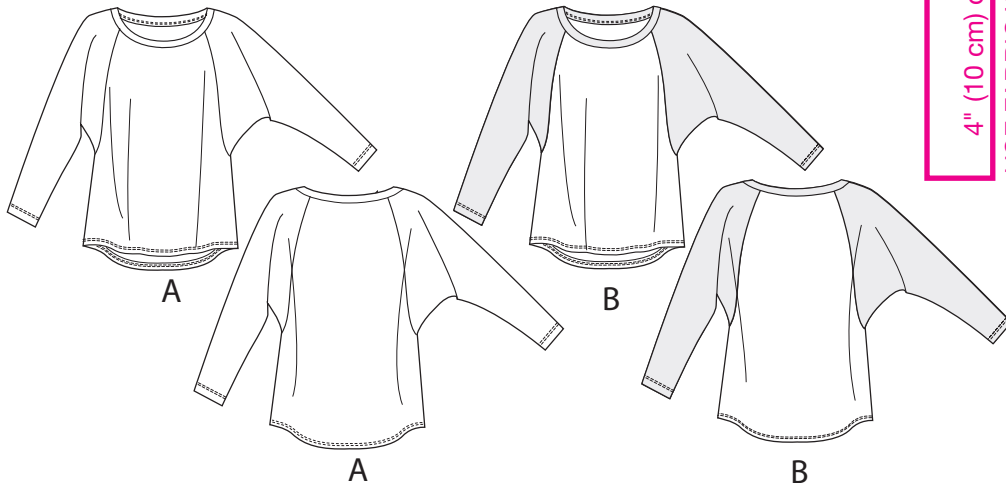
SIZES:	XS	S	M	L	XL	
Bust	31½-32½	34-35½	37-38½	40-41½	43-45	"
	80-83	86-90	94-98	102-106	110-114	cm
Waist	22½-23½	24¾-26	27½-29	31-33	35-37	"
	57-60	63-66	70-74	79-84	89-94	cm
Hip	32¼-34	35½-37	38½-40	41½-43½	45-47	"
	82-86	90-94	98-102	106-110	115-120	cm
Back Waist Length	15½	16	16½	17	17	"
	39	41	42	43	43	cm

### FINISHED GARMENT MEASUREMENTS:

SIZES:	XS	S	M	L	XL	
<b>Finished Length at Center Back From Waist</b>						
A, B	13 (33)	13½ (34)	14 (36)	14½ (37)	15 (38)	"(cm)

**MATERIAL REQUIRED:** Fabric requirement allows for nap, one-way design or shading. Extra fabric may be needed to match design or for shrinkage.

SIZES:	XS	S	M	L	XL	
<b>FABRIC 60" (152 cm) WIDE</b>						
A	1⅝ (1.5)	1⅝ (1.5)	1¾ (1.6)	1¾ (1.6)	1⅞ (1.8)	yd(m)
B	⅞ (0.8)	⅞ (0.8)	⅞ (0.8)	⅞ (0.8)	⅞ (0.8)	yd(m)
<b>Contrast B</b>	⅞ (0.8)	1 (1.0)	1 (1.0)	1⅛ (1.1)	1⅛ (1.1)	yd(m)



to at least

4" (10 cm) of Knit Fabric should stretch

USE FABRIC WITH 35% STRETCH ACROSS THE GRAIN

here.