

K4137 Misses' Skirts

XS-S-M-L-XL

Pull-on skirts have separate waist casing with elastic and narrow hems in two lengths.

View A: Flared. **View B:** A-line. Skirts are very easy to make and have special easy-to-follow instructions.

FABRICS: Designed for stretch knits only with 25% stretch across the grain.

Suggested Fabrics: Jersey, interlock, matte jersey, ponte knits.

STANDARD BODY MEASUREMENTS:

SIZES:	XS	S	M	L	XL	
Waist	22 ^{1/2} -23 ^{1/2}	24 ^{3/4} -26	27 ^{1/2} -29	31-33	35-37	"
	57-60	63-66	70-74	79-84	89-94	cm
Hip	32 ^{1/4} -34	35 ^{1/2} -37	38 ^{1/2} -40	41 ^{1/2} -43 ^{1/2}	45-47	"
	82-86	90-94	98-102	106-110	115-120	cm

FINISHED GARMENT MEASUREMENTS:

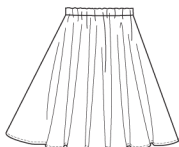
SIZES:	XS	S	M	L	XL	
Finished Length at Center Back From Waist						
Skirt A	21 ^{1/4} (54.6)	21 ^{3/4} (56.0)	22 ^{1/4} (56.6)	22 ^{3/4} (58.0)	23 ^{1/4} (59.6)	" (cm)
Skirt B	24 ^{1/2} (62.3)	25 (64)	25 ^{1/2} (65.3)	26 (66)	26 ^{1/2} (67.3)	" (cm)

MATERIAL REQUIRED: Fabric requirement allows for nap, one-way design or shading.

Extra fabric may be needed to match design or for shrinkage.

SIZES:	XS	S	M	L	XL	
FABRIC 60" (152 cm) WIDE						
Skirt A	1 ^{5/8} (1.5)	1 ^{3/4} (1.6)	1 ^{3/4} (1.6)	1 ^{7/8} (1.8)	2 (1.9)	yd (m)
Skirt B	1 ^{5/8} (1.5)	1 ^{3/4} (1.6)	1 ^{3/4} (1.6)	1 ^{7/8} (1.8)	1 ^{7/8} (1.8)	yd (m)

NOTIONS: A, B: 1^{1/4} yd (1.2 m) of 1" (2.5 cm) elastic.



A

Front



A

Back



B

Front



B

Back