

K4138 Misses' Jumper and Jumpsuit

XS-S-M-L-XL

Jumper and jumpsuit have self-faced bib, shoulder straps that button at top of bib, waistband, waist gathers, side seam pockets, back lapped zipper with button closure and topstitching detail. **Jumper A:** Patch pocket, skirt cut on crosswise grain.

FABRICS: Designed for light to medium weight wovens.

Suggested Fabrics: Cotton types, denim, rayon, challis.

STANDARD BODY MEASUREMENTS:

SIZES:	XS	S	M	L	XL	
Bust	31 ¹ / ₂ -32 ¹ / ₂	34-35 ¹ / ₂	37-38 ¹ / ₂	40-41 ¹ / ₂	43-45	"
	80-83	86-90	94-98	102-106	110-114	cm
Waist	22 ¹ / ₂ -23 ¹ / ₂	24 ³ / ₄ -26	27 ¹ / ₂ -29	31-33	35-37	"
	57-60	63-66	70-74	79-84	89-94	cm
Hip	32 ¹ / ₄ -34	35 ¹ / ₂ -37	38 ¹ / ₂ -40	41 ¹ / ₂ -43 ¹ / ₂	45-47	"
	82-86	90-94	98-102	106-110	115-120	cm
Back Waist Length	15 ¹ / ₂	16	16 ¹ / ₂	17	17	"
	39	41	42	43	43	cm

FINISHED GARMENT MEASUREMENTS:

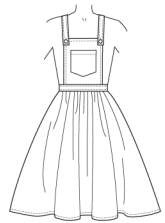
SIZES:	XS	S	M	L	XL	
Finished Length at Center Back From Waist						
Jumper A	18 ³ / ₄ (48.2)	19 ¹ / ₄ (49.7)	19 ³ / ₄ (51.2)	20 ¹ / ₄ (51.7)	20 ³ / ₄ (53.2)	" (cm)
Finished Width at Bottom Leg						
Jumpsuit B	18 (46)	18 ¹ / ₂ (47.5)	19 (49)	19 ¹ / ₂ (50.5)	20 (51)	" (cm)
Finished Inside Leg Seam						
Jumpsuit B	31 ¹ / ₂ (80.5)	32 (82)	32 ¹ / ₂ (83)	33 (84)	33 ¹ / ₂ (85.5)	" (cm)

MATERIAL REQUIRED: Fabric requirement allows for nap, one-way design or shading.

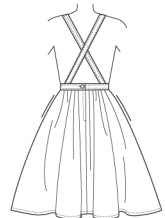
Extra fabric may be needed to match design or for shrinkage.

SIZES:	XS	S	M	L	XL	
FABRIC 45" (115 cm) WIDE						
Jumper A	2 ³ / ₄ (2.6)	2 ³ / ₄ (2.6)	2 ⁷ / ₈ (2.7)	3 ³ / ₈ (3.1)	3 ¹ / ₂ (3.2)	yd (m)
Jumpsuit B	3 ¹ / ₈ (2.9)	3 ¹ / ₄ (3.0)	3 ¹ / ₄ (3.0)	3 ¹ / ₂ (3.2)	3 ¹ / ₂ (3.2)	yd (m)
FABRIC 60" (152 cm) WIDE						
Jumper A	2 ¹ / ₂ (2.3)	2 ¹ / ₂ (2.3)	2 ¹ / ₂ (2.3)	2 ⁵ / ₈ (2.4)	2 ⁵ / ₈ (2.4)	yd (m)
Jumpsuit B	2 ¹ / ₂ (2.3)	2 ¹ / ₂ (2.3)	2 ¹ / ₂ (2.3)	2 ⁵ / ₈ (2.4)	2 ⁷ / ₈ (2.7)	yd (m)
FUSIBLE INTERFACING 18", 20" (46, 51 cm) WIDE						
A, B	1 ¹ / ₄ (1.2)	1 ¹ / ₄ (1.2)	1 ³ / ₈ (1.3)	1 ³ / ₈ (1.3)	1 ³ / ₈ (1.3)	yd (m)

NOTIONS: One 7" (18 cm) zipper, three 1" (2.5 cm) buttons.



A
Front



A
Back



B
Front



B
Back