

K4141 Misses' Jackets

XS-S-M-L-XL

Unlined jackets with no closure, have front princess seams, faced pockets, with lapped and conventional seams. All outside edges are raw, finished with straight or decorative topstitching. **View A:** Shawl collar and cuffs. **View B:** Shawl collar with hood. Wrong side of fabric will show.

FABRICS: Designed for stretch knits only with 25% stretch across the grain.

Suggested Fabrics: Fleece, sweatshirt fleece, interlock, novelty knits. Lining A, B (Pocket): Tricot, cotton interlock.

STANDARD BODY MEASUREMENTS:

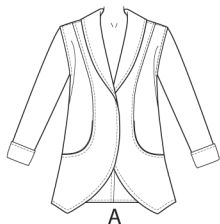
SIZES:	XS	S	M	L	XL	
Bust	31 ¹ / ₂ -32 ¹ / ₂	34-35 ¹ / ₂	37-38 ¹ / ₂	40-41 ¹ / ₂	43-45	"
	80-83	86-90	94-98	102-106	110-114	cm
Waist	22 ¹ / ₂ -23 ¹ / ₂	24 ³ / ₄ -26	27 ¹ / ₂ -29	31-33	35-37	"
	57-60	63-66	70-74	79-84	89-94	cm
Hip	32 ¹ / ₄ -34	35 ¹ / ₂ -37	38 ¹ / ₂ -40	41 ¹ / ₂ -43 ¹ / ₂	45-47	"
	82-86	90-94	98-102	106-110	115-120	cm
Back Waist Length	15 ¹ / ₂	16	16 ¹ / ₂	17	17	"
	39	41	42	43	43	cm

FINISHED GARMENT MEASUREMENTS:

SIZES:	XS	S	M	L	XL	
Finished Length at Center Back From Waist						
Jacket A, B	14 (36)	14 ¹ / ₂ (37.3)	15 (38)	15 ¹ / ₂ (39.3)	16 (41)	" (cm)

MATERIAL REQUIRED: Fabric requirement allows for nap, one-way design or shading. Extra fabric may be needed to match design or for shrinkage.

SIZES:	XS	S	M	L	XL	
FABRIC 60" (152 cm) WIDE						
Jacket A	2 ¹ / ₄ (2.1)	2 ¹ / ₄ (2.1)	2 ³ / ₈ (2.2)	2 ⁷ / ₈ (2.7)	3 (2.8)	yd (m)
Jacket B	2 ¹ / ₈ (2.0)	2 ¹ / ₄ (2.1)	2 ³ / ₈ (2.2)	2 ³ / ₄ (2.6)	3 (2.8)	yd (m)
Lining A, B	⁵ / ₈ (0.6)	⁵ / ₈ (0.6)	⁵ / ₈ (0.6)	⁵ / ₈ (0.6)	⁵ / ₈ (0.6)	yd (m)



Front



Back



Front



Back